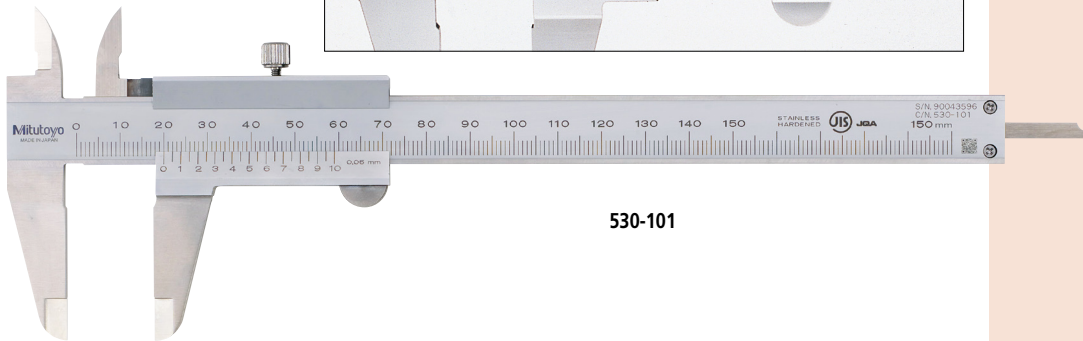
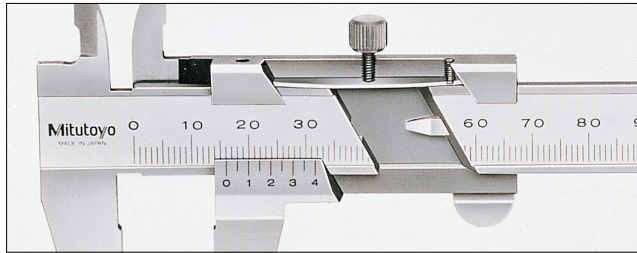
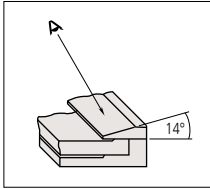


# Calipers

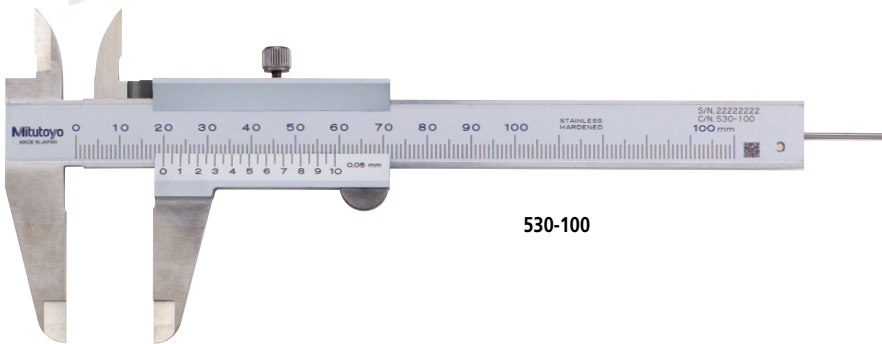
An industry standard measuring tool

## Vernier Caliper 530 Series — Standard model

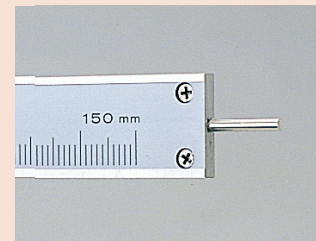
- Plain and basic design.
- Stepped graduation face prevents dust ingress between the main scale and slider.
- The small vernier face angle (14°) provides easy reading.
- Can measure outside and inside dimensions, depth, and steps.
- Carbide-tipped jaw calipers are optimal for rough finished parts, castings, grinding stones, etc.
- Decimal and fractional graduated scales (metric/inch and inch models only).



530-101



530-100



530-102 (Round depth bar type)

### DIMENSIONS

Unit: mm

Range	Outside jaw thickness
0 - 100 mm	3
0 - 150 mm	3
0 - 200 mm	3
0 - 300 mm	3.8
0 - 600 mm	6
0 - 1000 mm	8

Range	A	B	D	E	F	H	L
0 - 100 mm	17	21.5	40	53.5	30	16	182
0 - 150 mm	17	21.5	40	53.5	30	16	229
0 - 200 mm	20.5	25	50	53.5	30	16	288
0 - 300 mm	22	27.5	64	66.5	36	20	404
0 - 600 mm	38	47	90	89	50	25	780
0 - 1000 mm	50	60	130	111	61	32	1240

Note: Order No.530-100 and No.530-102 incorporate a round depth bar (ø1.9 mm).  
The depth bar shown in the illustration above is a different type.



530-320 (Carbide-tipped jaw type)

## Technical Data

Graduation: 0.05 mm, 0.05 mm (1/128 in) or 0.001 in (1/128 in)  
 High accuracy type:  
 0.02 mm or 0.02 mm (0.001 in)

## SPECIFICATIONS

Metric				
Order No.	Range	Maximum Permissible Error (mm) •EMPE (outside measurement) •SMPE (inside measurement)	Depth bar	Remarks
530-101	0 - 150 mm	±0.05	Blade	—
530-122*		±0.03		High accuracy model
530-108	0 - 200 mm	±0.05		—
530-123*		±0.03		High accuracy model
530-109	0 - 300 mm	±0.08		—
530-124*		±0.04		High accuracy model

Order No.	Range	Accuracy	Depth bar	Remarks
530-100	0 - 100 mm	±0.05	ø1.9 mm rod	—
530-102		±0.05		—
530-320	0 - 150 mm	±0.05	Blade	Carbide-tipped jaws for outside measurement
530-335		±0.05		Carbide-tipped jaws for outside and inside measurement
530-321	0 - 200 mm	±0.05		Carbide-tipped jaws for outside measurement
530-322	0 - 300 mm	±0.08		Carbide-tipped jaws for outside measurement
530-501	0 - 600 mm	±0.10	—	—
530-502	0 - 1000 mm	±0.15	—	—

\* Graduation: 0.02 mm

Metric/Inch with metric/inch double scale

Order No.	Range	Accuracy	Depth bar	Graduation	Remarks
530-104	0 - 150 mm	±0.05	Blade	1/128 in	—
530-316				1/128 in	Clamping screw below the slider
530-312*				0.001 in	High accuracy model: ±0.03 mm
530-114	0 - 200 mm	±0.05		1/128 in	—
530-118*				0.001 in	High accuracy model: ±0.03 mm
530-115	0 - 300 mm	±0.08		1/128 in	—
530-119*			0.001 in	High accuracy model: ±0.04 mm	

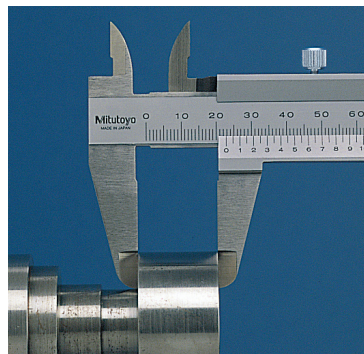
\* Graduation: 0.02 mm

Inch with inch/inch double scale

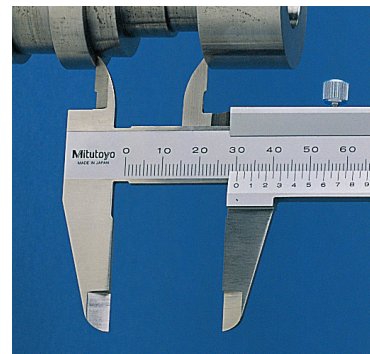
Order No.	Range	Accuracy	Depth bar	Graduation	Remarks
530-105	0 - 6 in	±0.05/128 in	Blade	1/128 in	—
530-116	0 - 8 in	±0.05/128 in			

## Measurement Applications

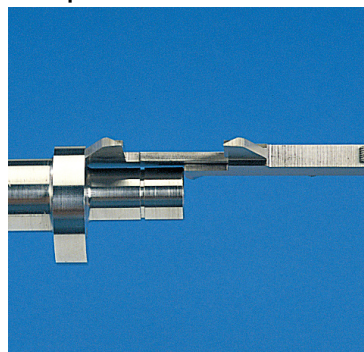
### 1. Outside measurement



### 2. Inside measurement



### 3. Step measurement



### 4. Depth measurement

