



(Refer to page X for details.)



(Refer to page X for details.)



### Technical Data

Accuracy: Refer to the list of specifications.

(excluding quantizing error for digital models)

Resolution\*: 0.01 mm or 0.00005 in / 0.01 mm

Graduation\*\*: 0.05 mm

Display\*: LCD

Scale type\*: ABSOLUTE electromagnetic induction linear encoder

Max. response speed\*: Unlimited

Battery: **SR44** (1 pc), **938882**,

for initial operational checks (standard accessory)

Battery life\*: Approx. 5 years under normal use

Dust/Water protection level\*: IP67 (IEC 60529)\*\*\*

\* Digital models \*\* Analog models

\*\*\* Rustproofing shall be applied after use if caliper was in contact with coolant.

### Optional accessories for Digital Models

For details, refer to page D-39.

Connecting cables for IT/DP/MUX

**05CZA624**: SPC cable with data button (1 m)

**05CZA625**: SPC cable with data button (2 m)

**USB Input Tool Direct**

**06AFM380A**: SPC cable for **USB-ITN-A** (2 m)

Wireless data output **U-WAVE<sup>®</sup> fit**

**U-WAVE-TC: 264-620** (IP67 type)

**264-621** (Buzzer type)

Connecting unit for U-WAVE-TC:

**02AZF310** (IP67 type)

**02AZF300** (Buzzer type)

Refer to page A-15 for details

Note: cannot be used with 573-642-20, 573-643-20 and 573-742-20

### SPECIFICATIONS

Metric	Digital model		
Order No.	Range	Accuracy	Remarks
<b>573-642-20</b>	10 - 200 mm	±0.05 mm	Knife-edge type, Measurable min.
<b>573-643-20*</b>	10 - 200 mm	±0.05 mm	Knife-edge type, Measurable min.
<b>573-645-20**</b>	10.1 - 160 mm	±0.05 mm	Inside groove type, Measurable min.
<b>573-647-20*</b>	10.1 - 160 mm	±0.05 mm	Inside groove type, Measurable min.
<b>573-646-20**</b>	20.1 - 170 mm	±0.05 mm	Point jaw type, Measurable min.
<b>573-648-20*</b>	20.1 - 170 mm	±0.05 mm	Point jaw type, Measurable min.

\* without thumb roller

\*\* Includes the offsetting function, which indicates the actual measurement value.

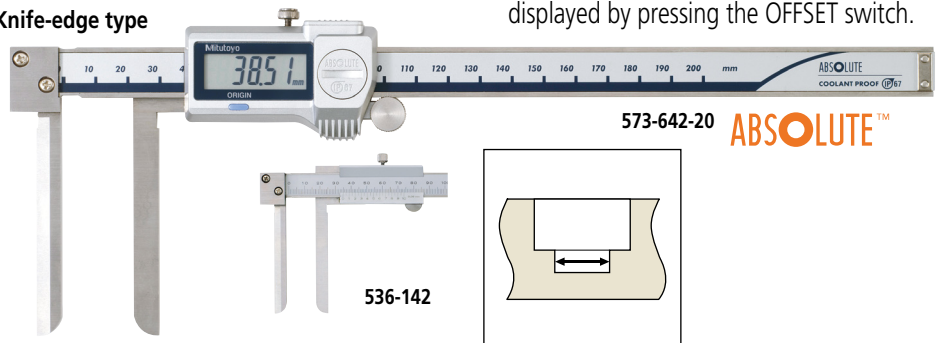
Metric	Analog model		
Order No.	Range	Accuracy	Remarks
<b>536-142</b>	10.1 - 200 mm	±0.12 mm	Knife-edge type, Measurable min.
<b>536-145</b>	10.1 - 150 mm	±0.05 mm	Inside groove type, Measurable min.
<b>536-146</b>	20.1 - 150 mm	±0.05 mm	Point jaw type, Measurable min.
<b>536-147</b>	30.1 - 300 mm	±0.08 mm	Point jaw type, Measurable min.
<b>536-148</b>	70.1 - 450 mm	±0.10 mm	Point jaw type, Measurable min.
<b>536-149</b>	70.1 - 600 mm	±0.12 mm	Point jaw type, Measurable min.

## ABSOLUTE Inside Caliper SERIES 573, 536 — Knife-edge/Inside Groove/Point Jaw Type

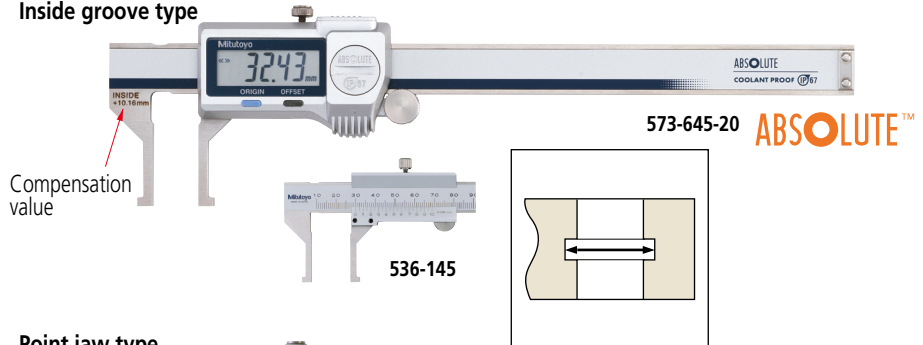
MeasurLink<sup>®</sup> ENABLED  
Data Management Software by Mitutoyo

- Specially designed for inside measurements in hard-to-reach places.
- Digital models are IP67 Absolute type. No need to reset the origin after switching on. (Refer to page D-8 for a description of Absolute measurement.)
- Allows integration into statistical process control and measurement systems for models with measurement data output connector. Refer to page A-3.
- It is necessary for measurement values of 573-645-20 and 573-646-20 to add the correction value to the displayed value. However, the featured offset function enables direct reading of the correction value displayed by pressing the OFFSET switch.

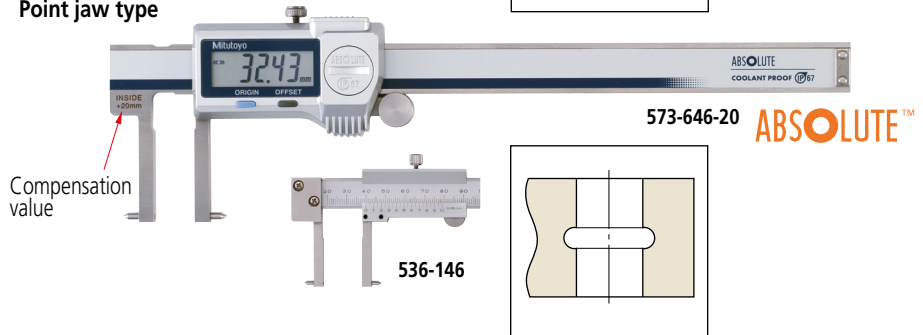
### Knife-edge type



### Inside groove type



### Point jaw type



Inch/Metric	Digital model		
Order No.	Range	Accuracy	Remarks
<b>573-742-20</b>	0.4 - 8 in	±0.002 in	Knife-edge type, Measurable min.
<b>573-745-20**</b>	0.404 - 6.4 in	±0.002 in	Inside groove type, Measurable min.
<b>573-746-20**</b>	0.804 - 6.8 in	±0.0015 in	Point jaw type, Measurable min.

\*\* Includes the offsetting function, which indicates the actual measurement value.

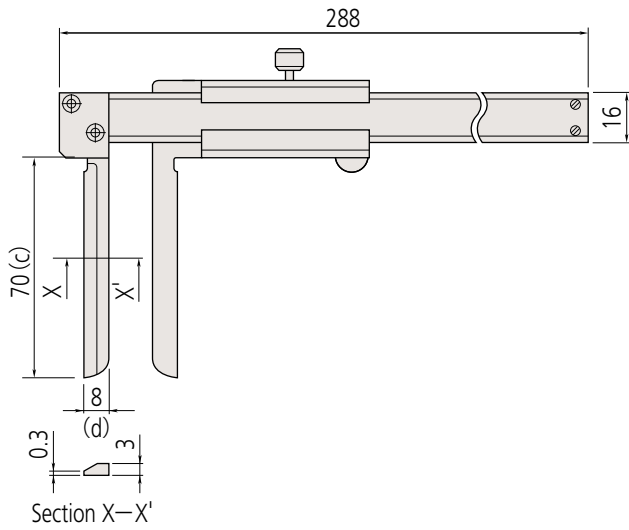
# Calipers

An industry standard measuring tool

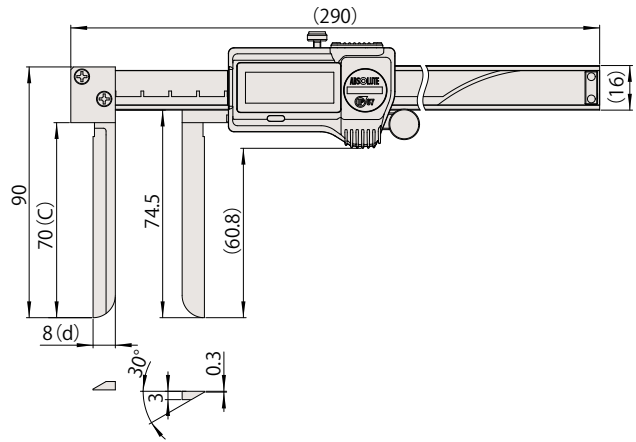
## DIMENSIONS

Unit: mm

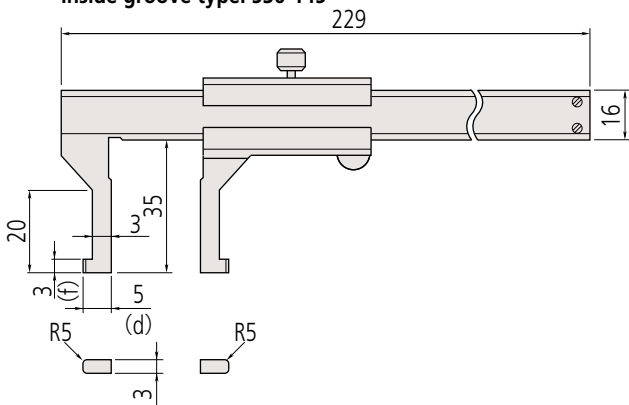
Knife-edge type: 536-142



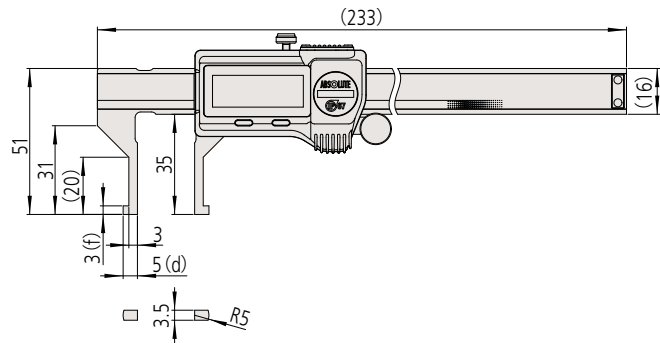
Knife-edge type: 573-642-20, 573-643-20, 573-742-20



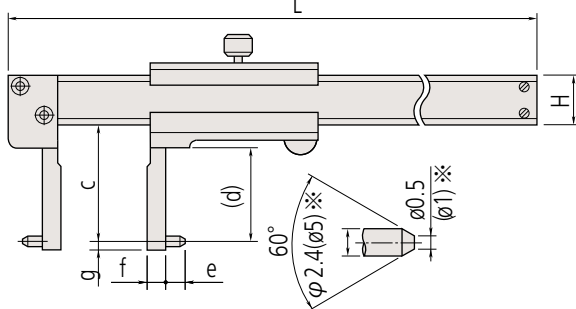
Inside groove type: 536-145



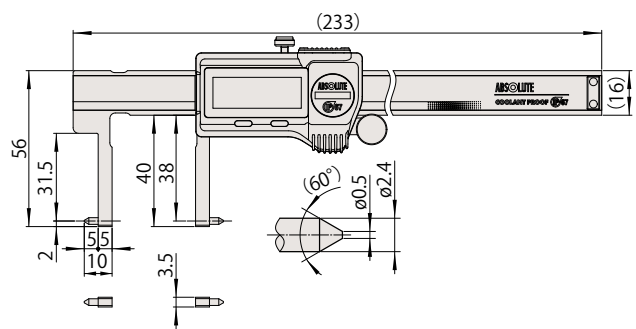
Inside groove type: 573-645-20, 573-647-20, 573-745-20



Point jaw type: 536-146, 147, 148, 149



Point jaw type: 573-646-20 573-648-20, 573-746-20



Range	c	d	e	f	g	H	L
150 mm	38	31	5	5	2	16	229
300 mm	98	89	5	10	2	20	403
450 mm	145	136	10	25	5	25	610
600 mm	145	136	10	25	5	25	750