



HI148 Series **Waterproof Thermologgers**

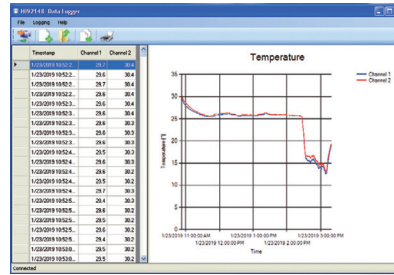


HI148 Series Waterproof Thermologgers

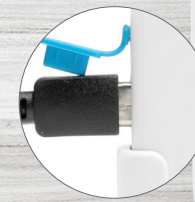
The HI148 series of thermologgers are ideal for monitoring temperature in applications such as food processing, transportation, museums, and horticulture.

The thermologgers feature extensive memory capacity: 16,000 samples for 1-channel models and 8000 samples/channel for 2-channel models.

The HI92148 application software (required) supports communication between the logger and a PC running Windows® OS through a USB-C cable. Using the application, data acquisition parameters are user selectable and logged data can be downloaded and stored via USB cable.



- IP67 waterproof casing
- Wall cradle included for versatile installation and easy thermologger removal
- One or two channels, with internal and/or external sensor
- 16,000 samples (for 1-channel models) or 8000 samples/channels (for 2-channels models)
- Programmable high and low alarms
- Programmable logging interval from 1 second to 24 hours for 1-channel models, from 2 seconds to 24 hours for 2-channel models
- Storing of temperature at logging interval, or min or max temperature between logging intervals
- Logging delay start from 1 second to 199 hours using the HI92148 PC application or the Log start button
- Non-volatile storage of logging parameters and data in EEPROM
- BEPS (Battery Error Prevention System)
- Security password and lot serial number
- USB Type-C connector
- All HI148 thermologgers are factory calibrated.



USB connection



HI148-1
1 internal sensor
(shown with included wall cradle)

Specifications		HI148 Series
Model	Sensors	
HI148-1	T1 internal	-20.0 to 60.0°C / -4.0 to 140.0°F
HI148-2	T1 external	-40.0 to 125.0°C / -40.0 to 257.0°F
HI148-3	T1 internal T2 external	-20.0 to 60.0°C / -4.0 to 140.0°F -40.0 to 125.0°C / -40.0 to 257.0°F
HI148-4	T1 external T2 external	-40.0 to 125.0°C / -40.0 to 257.0°F -40.0 to 125.0°C / -40.0 to 257.0°F
Resolution		0.1°C (-40.0 to 100.0°C); 0.2°C (temp. >100.0°C) 0.1°F (-40.0 to 190.0°F); 0.3°F (temp. >190.0°F)
Accuracy		±0.5°C (-40.0 to 0.0 and 70.0 to 100.0°C); ±0.4°C (0.0 to 70.0°C); ±1.0°C (>100.0°C) ±1.0°F (-40.0 to 32.0 and 158.0 to 212.0°F); ±0.8°F (32.0 to 158.0°F); ±2.0°F (>212.0°F)
Additional Specifications	Probe	stainless steel probe with 1 m (3.3') silicone cable; 33.5 mm (1.32") length, 3.5 mm (0.14") diameter
	Battery Type / Life	1.5V AAA (3) / approximately 2 years of use
	Environment	-20.0 to 60.0°C (-4.0 to 140.0°F); RH 100%
	Dimensions	107 x 59 x 17 mm (4.2 x 2.3 x 0.7")
	Weight	130 g (4.6 oz)
Ordering Information		HI148-1 (1 internal sensor) is supplied with wall cradle, software, USB type A to C cable, batteries, and instruction manual. HI148-2 (1 external sensor) is supplied with wall cradle, software, USB type A to C cable, batteries, and instruction manual. HI148-3 (1 internal, 1 external sensor) is supplied with wall cradle, software, USB type A to C cable, batteries, and instruction manual. HI148-4 (2 external sensors) is supplied with wall cradle, software, USB type A to C cable, batteries, and instruction manual.



HI148-2
1 external sensor



HI148-3
1 internal and 1 external sensor



HI148-4
2 external sensors