

| Order Code | Description |
|--|---------------------------------------|
| <input checked="" type="checkbox"/> DPMIR1 | PosiTector Standard with DPM IR Probe |
| <input type="checkbox"/> DPMIR3 | PosiTector Advanced with DPM IR Probe |


| PosiTector® <i>DPM</i> Dew Point Meter | | Compare PosiTector Gage Bodies | |
|--|----------------|---|--|
| Features | Standard | Advanced | |
| NEW Larger 2.8" impact resistant color touchscreen with redesigned keypad for quick menu navigation | ● | ● | |
| Auto Log mode runs unattended on batteries for up to 50 hours or continuously via USB | ● | | |
| Enhanced Auto Log mode turns the gage off between readings for up to 8 months of battery life. Each reading can be uploaded to PosiSoft.net or an FTP server using WiFi. Automatically group readings into batches at daily, weekly, or monthly intervals. | | ● | |
| Two year warranty on body AND probe | ● | ● | |
| User defined limits for all parameters—visible and audible warnings. Send email alerts when connected to WiFi. | | ● | |
| Reading Storage Capacity | 2,500 datasets | 250,000 datasets in up to 1,000 batches | |
| NEW Touchscreen keyboard for quickly renaming batches, adding notes, and more | | ● | |
| Store thickness, profile, environmental, salt contamination, hardness, and wall thickness measurements in individual batches | | ● | |
| Wet bulb temperature can be displayed and recorded | | ● | |
| Trend Charts graph readings in real-time | | ● | |
| Connection Options | | | |
| USB port for fast, simple connection to a PC and to supply continuous power. USB cable included. | ● | ● | |
| WiFi technology wirelessly synchronizes with PosiSoft.net and downloads software updates | | ● | |
| Bluetooth 4.0 Technology for data transfer to a mobile device running the PosiTector App or optional portable printer. BLE API available for integration into third-party software. | | ● | |



PosiTector DPM IR1



PosiTector DPM IR includes an infrared surface temperature probe

| Removeable Integral Probe | Probe Model DPM | |
|---|---|---|
| |  | |
| Surface Temperature | | ✓ |
| Air Temperature | | ✓ |
| Wet Bulb Temperature* | | — |
| Relative Temperature | | ✓ |
| Dew Point Temperature | | ✓ |
| Surface Temperature minus Dew Point Temperature | | ✓ |
| Wind Speed | | — |

*Wet Bulb Temperature displayed/recorded on PosiTector Advanced (3) models only

PosiTector DPM IR Probe measures and records climatic conditions including: Relative humidity, air temperature, surface temperature, dew point temperature and difference between surface and dew point temperatures—plus an infrared surface temperature probe.

All Gages Feature...

Simple

- All readings are constantly updated and displayed simultaneously
- Alarms indicate when climate conditions are unsuitable for painting
- **NEW** Larger 2.8" impact resistant color touchscreen with redesigned keypad for quick menu navigation
- **NEW** On-gage help explains menu items at the touch of a button

Durable

- **NEW** Weatherproof, dustproof, and water-resistant—IP65-rated enclosure
- **NEW** Ergonomic design with durable rubberized grip
- Shock-absorbing protective rubber holster for added impact resistance
- Two year warranty on gage body AND probe

Accurate

- Fast response precision sensors provide accurate, repeatable readings
- SmartTrend™ Indicators identify rising, falling or stable readings
- Certificate of Calibration included showing traceability to NIST (Long Form)
- Conforms to national and international standards including ISO and ASTM

Versatile

- Auto Log mode records environmental parameters at user selected time intervals
- **NEW** Auto rotating display with Flip Lock

Powerful

- Hold function freezes the display allowing measurements to be manually recorded
- **NEW** Instant-on feature quickly powers up the gage if recently powered down
- **NEW** Up to 30% longer battery life
- USB port for fast, simple connection to a PC and to supply continuous power. USB cable included.
- Includes PosiSoft suite of software for viewing and reporting data

| Order Code | Description |
|--|---------------------------------------|
| <input checked="" type="checkbox"/> DPMIR1 | PosiTector Standard with DPM IR Probe |
| <input type="checkbox"/> DPMIR3 | PosiTector Advanced with DPM IR Probe |

| Specifications | Range | Accuracy | Resolution |
|-------------------------------|----------------|-----------------|------------|
| Surface Temperature | -40° to 80° C | ± 0.5° C | 0.1° C |
| | 80° to 190° C | ± 1.5° C | |
| | -40° to 175° F | ± 1° F | 0.1° F |
| | 175° to 375° F | ± 3° F | |
| Infrared Surface Temperature* | -70° to 380° C | ± 1° C + 1%** | 0.1° C |
| | -94° to 716° F | ± 1.8° F + 1%** | 0.1° F |
| Air Temperature | -40° to 80° C | ± 0.5° C | 0.1° C |
| | -40° to 175° F | ± 1° F | 0.1° F |
| Humidity | 0 to 100% | ± 3% | 0.1% |
| Dew Point | -60° to 80° C | ± 3° C† | 0.1° C |
| | -76° to 175° F | ± 5.4° F*† | 0.1° F |

* DPM IR models only

** At = 23° C ambient

† Dependent on RH. See www.defelsko.com/TdAccuracy for more information.

| PosiTector DPM IR Specifications | |
|----------------------------------|-----------------------|
| Distance to Spot Ratio (D:S) | 4:1 |
| Emissivity | Adjustable |
| Response Time | <500 μ (95% Response) |
| Spectral Response | 5.5 – 14 μm |



Comes complete with PosiTector gage body, DPM IR probe, environmental sensors, protective rubber holster, wrist strap, 3 AAA batteries, instructions, nylon carrying case with shoulder strap (DPM/DPMA/DPMD), hard shell carrying case (DPMS), protective lens shield, Long Form Certificate of Calibration traceable to NIST, USB cable, two (2) year warranty.

***SIZE:** 127 x 66 x 25.4 mm (5" x 2.6" x 1")

***WEIGHT:** 137 g (4.9 oz.) without batteries

CONFORMS TO: ISO 8502-4, BS 7079-B4, ASTM D3276, IMO PSPC, SSPC-PA7, and US Navy NSI 009-32

*Size and weight are for the PosiTector gage body only and do not include the probe.

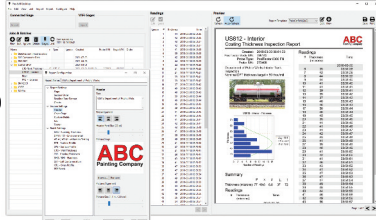
PosiSoft® Suite of Software

Powerful ways to view and report your PosiTector and PosiTest data

PosiSoft Desktop — PC/Mac

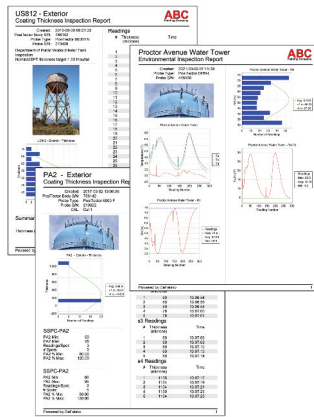
Powerful desktop software for downloading, archiving, and reporting measurement data.

- Import readings directly from the gage via USB, WiFi, or legacy PosiSoft Desktop versions
- **Jobs feature** consolidates batches into groups to keep measurement data organized and to quickly create multi-batch reports
- Fully integrates with PosiSoft.net—backup and synchronize jobs, batches, readings, and report templates to the cloud (see inset at right)
- Export readings as .csv (comma separated value) files for easy import into Excel and other spreadsheets



Professional, Custom Reports

- Compile single or multi-batch reports from multiple probes and instrument types
- Add pictures, screen captures, notes, and more with an onscreen live preview
- Instantly create professional reports from pre-formatted report templates
- Design custom layouts and templates—add custom cover pages and logos, and choose to display charts, histograms, and/or individual readings
- Drag-and-drop Custom Fields mode—import PDF forms and overlay fields to automatically populate inspection data

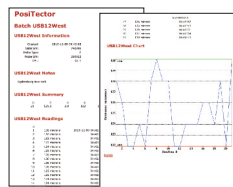


Prompted Batch Mode

Create pre-defined batches with onscreen text and image prompts for each reading and upload to PosiTector 6000, 200, and UTG gages (*Advanced models only*).

- Ideal for ensuring a consistent measurement pattern for repetitive jobs or when specific measurement locations are required

PosiSoft USB Drive — Gage based



A simple gage interface to retrieve data in a manner similar to USB flash drives or cameras. No software to install or internet connection required. Measurement data can be printed quickly from a formatted HTML report or exported in .csv format for further analysis in spreadsheets.

PosiTector App — iOS/Android

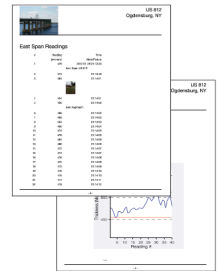
Fully-featured mobile app that connects to the PosiTector SmartLink, PosiTector Advanced gages, and the PosiTest AT-A.

- Auto pairing Bluetooth BLE connection
- Add images and notes to individual readings or batches directly from your device
- Email readings as .csv (comma separated value) files for easy import to Excel and other spreadsheets.
- Synchronize readings with PosiSoft.net—backup and synchronize jobs, batches, and readings to the cloud (see inset below)



Mobile Reporting Solution

- Compile single or multi-batch reports from multiple probes and instrument types
- Add pictures, screen captures, notes, and more
- Email pre-formatted or custom reports from your device instantly



PosiSoft.net

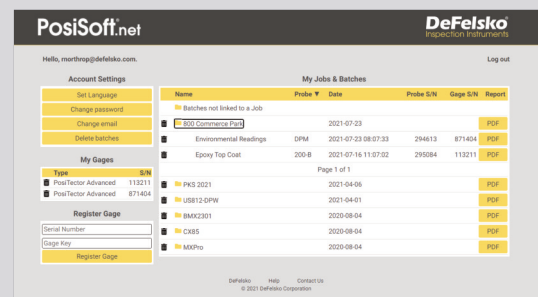
Secure storage of measurement data in the cloud.

compatible with PosiSoft Desktop and PosiTector App

- Upload measurement data directly from WiFi-connected PosiTector Advanced gages from anywhere in the world—no software required
- Synchronize and share measurement data across multiple computers

Ideal for...

- Users with multiple computers, instruments, and office locations
- Inspection companies managing data from multiple inspectors
- Login from PosiSoft Desktop to synchronize all measurement data and stored report templates from your account



PosiSoft.net Web Viewer Review measurement data and print simple, pre-formatted PDF reports from any web browser—no software installation required.

PosiTector Developer Resources

- Bluetooth 4.0
- WiFi
- Keyboard Mode
- USB Serial

PosiTector and PosiTest AT-A instruments can integrate with third-party software, drones, ROVs, PLCs, and robotic devices using several industry-standard communication protocols including: Bluetooth 4.0, WiFi, Keyboard mode, and USB serial.

